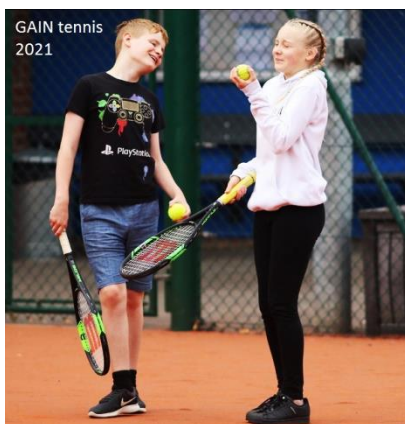


Grantham
Autistic
Information
Network
(GAIN)

Supporting parents and carers of young people with autism in Grantham and beyond.



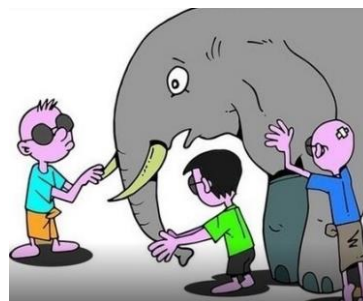
Grantham
Autistic
Information
Network

Does your child have difficulties with the following:

- Communication
- Lack of understanding: Social situations / Interacting with others
- Change to routine

CAN WE HELP ?

- In 2020 we launched a new Facebook group, [GAIN support](#), to foster online interaction.



- Anyone can follow us on our Facebook page: [@GAINGrantham](#)
- Our website aims to point people to sources of information and support that might help with autistic issues.
- Phone our helpline for a chat and a few pointers: **01476 600 074**

EVENTS

We put on autism-friendly events for children and young people up to the age of 25. We are planning events for 2023 in outdoor settings and large, well ventilated indoor spaces.

See **Events** tab on **Facebook** and events page on **website** for more information.



OUR CONTACT DETAILS

☎ 01476 600 074 (2020)

mailus@gain-grantham.co.uk

Postal address: GAIN Grantham
(2021) c/o 9 Eskdale Road
Grantham
Lincolnshire
NG31 8EP.

Contact us by phone or email. We should be able to point you to a few websites or specific pages that might be of help.

OUR MEDIA

Website: www.gain-grantham.co.uk

Our website aims to point people to information and events for **parents** and carers.

It also reaches out to **adults** and to the wider area around **Lincolnshire**.



Google:
gain grantham
autism grantham

YOUR CONTACT DETAILS

If you are interested in our email updates you might want to provide us with a few basic contact details

- Name
- Email
- Nearest town

We can target emails better if we know which town is nearest to you.

Your details will **NOT** be passed on to third parties.



Dear reader,

We would like to introduce ourselves. We are a group of individuals who bring our own experiences to the GAIN team on a voluntary basis.

We aim to support parents and carers of young people on the autistic spectrum in the Grantham area.

Our founder member, Jane Emery, recognised the absence of one-to-one support for those struggling with (or without) a diagnosis of this condition.

Over the years we have invited relevant service providers to speak. We have worked with Belton Lane children's centre, Swingbridge children's centre and Ambergate sports college,

Our current task is to adapt to changing circumstances.

Sincerely,

The GAIN team.